



Food Processing > Chemical > Health Products > Cosmetic > Pharmaceutical >

Formula-based manufacturers are requiring more out of their production software than ever before. No longer are they simply looking for formula management, production and accounting. In the highly competitive and highly regulated industry of today's process manufacturers, companies are relying on technology to do more with less, while maintaining strict security over their information. Regulations such as the Bioterrorism Act, FDA's 21 CFR 11 are just a few of the regulations that O2 can help an organization manage with ease.

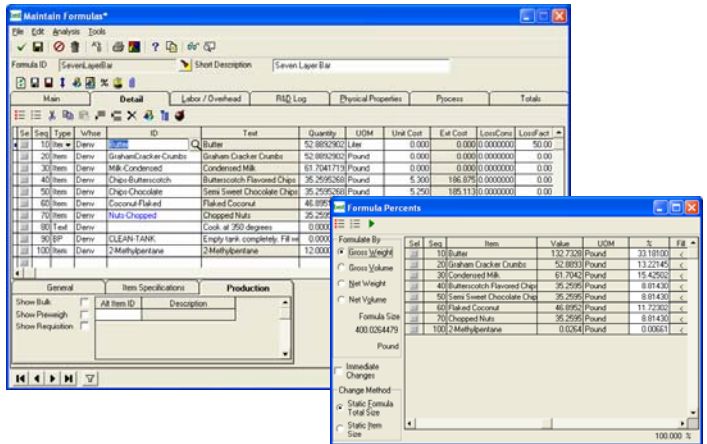
Are formulas only a portion of your business operations? O2 is the first true mixed-mode manufacturing on the market today. With capabilities such as bill of materials and routings, O2 is a complete solution for your mixed mode needs.

O2 and MAS 500

MAS 500 has long been an industry leader in distribution and accounting solutions. This robust product provides features such as:

- MS-SQL performance and scalability which manages high transaction volumes and rapid growth
• Advanced capabilities; Automate complex processes and provides the tools to manage multiple locations / facilities and international sourcing and sales
• Customizer module for complete customizability of your MAS 500 screens to allow adaptation of changing requirements

O2 for MAS 500 leverages the strength of the accounting, distribution and discrete manufacturing modules of MAS 500 and adds an equally full-featured Process and Mixed-Mode Manufacturing system. By leveraging the advantage of the powerful MAS 500 toolset, Customizer Module and MRP with the feature set of O2, process manufacturing and mixed mode companies can take advantage of leading software made specifically for their industry.



Formulate by weight, volume or percentage

Formula Management

Formulas are the life-blood of a process manufacturer. Managing a high number of formulas can be a tedious and time consuming task. Have O2 help you get control of your formulas with:

- Formula security by formula group, which provides formula security by location, department or user privilege
• Formula life cycle tracking
• Formulate, in gross or net, by weight/volume or percentage
• R&D record tracking
• QC tests, batteries and physical property specifications
• Intermediate explosion
• Powerful search capabilities; query your formulas by physical properties, descriptive properties, or any user defined properties of the formula.
• Revision history tracking
• Gross to net calculations at the line item level
• Dosage and serving size

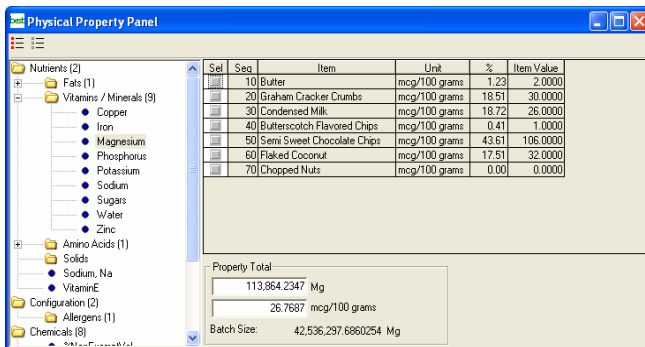


## Physical Properties:

Manage the intricacies of your organization with the physical properties of O2. A physical property is a user-defined specification that can be attached to inventory items, lots, formulas, customer/item keys and QC tests and batteries. Say you want to perform a search of all formulas that are alcohol based, are red, and that have a pH level of 3-4. Or say that your company manufactures food, your specification for a certain product is 8-10 grams of fat, yet you have a customer who requires no more than 8.5 grams of fat for that product. With O2 physical properties, both of these scenarios, plus many, many more are easily managed.

Use O2 physical properties to print and manage your Certificates of Analysis, item and customer specification reports and a variety of compliance reports required by your industry.

- Physical property specifications and results can be defined as <, <=,=,>, >=. So if your test is that E. Coli is tested as <2 ppm, O2 will understand that this is not the same as E. Coli = 2 ppm
- Physical properties can be descriptive or calculated
- Define physical property groups and sub groups
- Generate customer specific Certificate of Analysis reports
- Search your inventory items and formulas by physical property



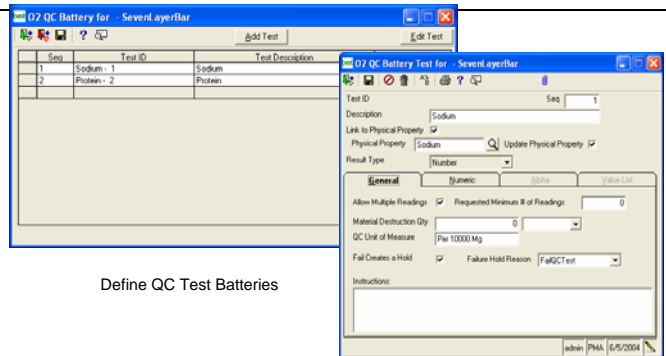
Item	Unit	%	Item Value
10) Butter	mcg/100 grams	1.23	2.0000
20) Graham Cracker Cumbs	mcg/100 grams	18.51	30.0000
30) Condensed Milk	mcg/100 grams	18.72	26.0000
40) Butterscotch Flavored Chips	mcg/100 grams	0.41	1.0000
50) Semi Sweet Chocolate Chips	mcg/100 grams	43.61	106.0000
60) Flaked Coconut	mcg/100 grams	17.51	32.0000
70) Chopped Nuts	mcg/100 grams	0.00	0.0000

Property Total  
113,864,2347 Mg  
26,7687 mcg/100 grams  
Batch Size: 42,536,297,6860254 Mg

Physical Properties Roll-up Panel

## Compliance Reporting

21CFR 11, MSDS, SARH, HAPS, HACCP, Bioterrorism Act; Just a few of the reporting requirements of process manufacturers. Become compliant with your regulatory and Best Practices requirements with O2 Compliance Reporting Module.



## Quality Control

If quality control is critical to your organization, look no further than O2. With O2 you can define your quality control tests for an item or formula and define your battery of QC tests for each product.

As products are received or produced, your QC staff can have work assigned to their queue. If you require multiple readings of your QC tests, O2 can help you manage your readings. With integration to the physical properties module, the final QC reading can update the lot's physical properties. Analyze your QC data in our Business Insights Analysis Tool; with sophisticated query tools, pivot tables and graphical display generators, your QC data can now be easily accessible, powerfully searchable and dramatically presentable.

If a lot fails QC, is expired or needs to be on hold for any reason, O2 will not allow the lot to be used in production or shipped to customers.

Other features include:

- Destructive or non-destructive tests
- Multiple readings per test
- Attachments to test reading results
- QC tests can automatically put a lot on hold

## Production / Production Engineering

O2 Production was designed for both batch processing and continuous flow manufacturing. Manage your production like never before with:

- "What-if" scenarios of assigning lots to a batch. How do they affect the physical properties of the batch?
- Instructions can change based on warehouse and size of batch
- Track and report on QC adds to a batch
- Critical Materials Inquiry integrates with MRP
- Unlimited cost codes for labor and overhead allocations