

O2 Mobile Warehouse



Escape Velocity Systems

O2 Mobile Warehouse

- **Smart-Barcode™ Technology**
- **Increase accuracy and control of inventory**
- **Benefits of real time data entry**
- **Easily create bar code labels with Crystal Reports**

While change may be necessary for your organization, a change in systems, processes and culture is not easy for your employees. However, by minimizing the learning curve on new processes and technologies your employees will adopt to the new culture easier and more rapidly, increasing the return on investment of your new application. With Smart-Barcode™ technology, your warehouse automation system can navigate, lookup and validate entries with the scan of a single barcode. No longer do your employees have to hit a series of keys and commands to get to a function within the system, lookup selected data and risk putting the correct information in the wrong field (i.e. the lot number in the location field). Increase the visibility and accuracy of your warehouse operations while helping your employees quickly adapt to the change with O2 Mobile Warehouse and Smart-Barcode™ technology.

Purchase Order Receiving

Increase the accuracy, speed and effectiveness of your receiving department with the O2 Mobile Warehouse. By utilizing Smart-Barcode™ technology your employees will learn in minutes, how to perform the receiving function. With a couple scans from a barcode reader, your inventory will be received, compared to the purchase order in MAS 500, validated against the receiving rules that you have defined and labels printed with any information you wish.

By empowering your receiving personnel to enter inventory receipts at the dock, you will have faster, more accurate inventory information of raw materials, better communication with production planning and scheduling functions and more timely information for material purchase planning.

Warehouse/Bin Movements

Knowing specifically where your inventory is located within your organization is essential to effective inventory management. For companies that manage lot tracked items and/or expiration dates of materials, this information becomes critical. Historically, capturing this information has been prohibited by cost; both human-capital and dollars, slowness by which transactions are updated and the ability of systems to handle the transactions.

With O2 Mobile Warehouse and Smart-Barcode™ technology, bin movements within a location is as simple as scanning a couple barcodes. Warehouse employees will adopt the process change easily because the process doesn't significantly interfere with their normal duties. They will embrace the change the first time they are able to find missing inventory by querying the barcode scanner to get the precise location.

Process Manufacturing

Process manufacturing generally has complex requirements in the warehouse environment. Warehouse personnel may have to manage inventory lots, expiration dates, hazardous materials,

quality control release/quarantine, etc. O2 Mobile Warehouse was specifically designed to enable material handlers to effectively and easily manage these inventory complexities.

This module, in conjunction with the O2 Process Manufacturing module of MAS 500 allows your to create production pick tickets based on rules you define, FEFO (first-expire, first out), oldest lot, single lot picking, etc. and either request or require your material handlers to pick these lots. Do you allow your material handlers to determine the material to pick? No problem, O2 Mobile Warehouse can tell your material handlers what item to pick, where the items reside in your plant and allow them to chose the appropriate lots.

As materials are produced and potentially put on pallets or in containers, O2 Mobile Warehouse can allow your material handlers to enter quantities produced for the batch, identify the pallet/container that they are on and track that pallet/container throughout your warehouse.

Flexible, rules-driven, simplicity in operation; words that describe how O2 Mobile Warehouse with Smart-Barcode™ technology will manage the complexities of your process manufacturing operation while providing ease of use to your employees enabling your employees rapid adoption to process change.

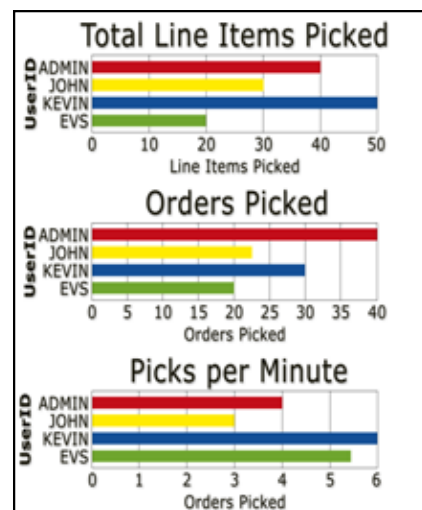
Sales Order Shipping/Picking

Sales order picking is a powerful and flexible function within O2 Mobile Warehouse and MAS 500. The warehouse management function of MAS 500 allows complex rules to determine what should be picked, where from, and how much. The O2 Mobile Warehouse will communicate the desired picks to your material handlers who will know exactly where in the warehouse the inventory resides. If you track inventory on containers or pallets, material handlers can load a pallet, homogeneous item, mixed items, mixed lots, etc. and stage the pallet for shipping. With O2 Mobile Warehouse and Smart-Barcode™ technology, shipping is as simple as a couple scans; shipping documents are printed, and MAS 500 is immediately updated for the shipment.

By enabling your material handling and shipping personnel to enter picking and shipping information, you will have faster, more accurate inventory information of inventory, exceptions to picks can be more easily noted, and you can have better communication with accounts receivable and production planning.

Physical and Cycle Counts

Increase the speed and accuracy of your physical counts while minimizing the effort and costs to capture the required data with O2 Mobile Warehouse with Smart-Barcode™ technology.





Escape Velocity Systems, Inc.
2520 55th Street, Suite 204
Boulder, CO 80301

303-494-1765
www.evs-sw.com